

Cape Sable Seaside Sparrow Habitat Conditions (Sparrow Viewer Tool)

Amount of Dry¹ Habitat Area (km²) by Subpopulation

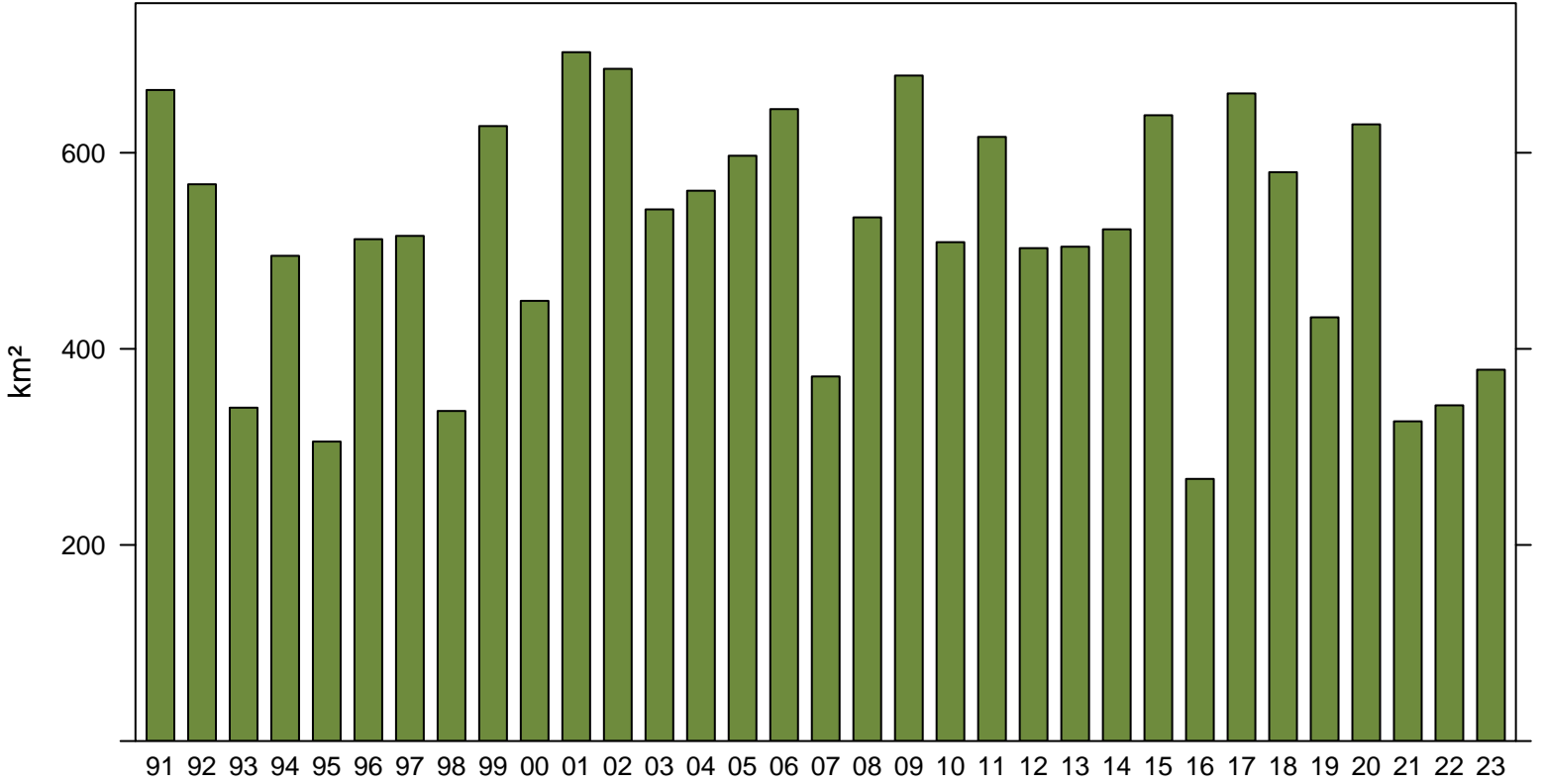
04/22/2024 Compared to 04/22 on Previous Years of Record

Date	AX	A	A1	A2	B	C	D	E	F	Total
1993-04-21	20.48	8.16	0.00	20.48	133.60	37.76	29.76	94.24	24.16	340.00
1994-04-21	138.08	83.04	48.64	48.32	163.52	37.12	29.92	102.08	24.16	494.88
1995-04-21	0.00	0.00	0.00	0.00	152.16	37.76	33.92	57.44	24.16	305.44
1996-04-21	145.76	74.24	82.72	48.00	163.36	37.76	39.36	101.44	24.16	511.84
1997-04-21	148.32	84.96	74.56	48.32	163.52	37.76	39.36	102.08	24.16	515.20
1998-04-21	41.44	22.24	34.24	7.20	141.44	36.80	23.36	69.44	24.16	336.64
1999-04-21	252.80	181.28	84.00	48.32	171.04	37.76	39.36	102.08	24.16	627.20
2000-04-21	111.04	49.44	64.32	43.36	149.60	37.76	28.00	98.40	24.16	448.96
2001-04-21	328.16	256.64	84.00	48.32	171.04	37.76	39.36	102.08	24.16	702.56
2002-04-21	312.16	240.64	84.00	48.32	170.72	37.76	39.36	101.44	24.16	685.60
2003-04-21	220.00	148.48	84.00	48.32	134.72	37.76	31.68	93.92	24.16	542.24
2004-04-21	193.60	122.08	84.00	48.32	168.32	37.76	39.36	98.08	24.16	561.28
2005-04-21	227.20	155.68	84.00	48.32	169.12	37.76	36.64	102.08	24.16	596.96
2006-04-21	270.88	199.36	84.00	48.32	170.88	37.76	38.72	102.08	24.16	644.48
2007-04-21	108.32	42.72	62.72	42.72	112.64	37.76	25.28	63.68	24.16	371.84
2008-04-21	178.72	107.20	84.00	48.32	162.72	37.76	30.56	100.16	24.16	534.08
2009-04-21	304.32	232.80	84.00	48.32	171.04	37.76	39.36	102.08	24.16	678.72
2010-04-21	168.80	98.40	82.88	48.32	154.88	37.76	26.40	96.80	24.16	508.80
2011-04-21	241.76	170.24	84.00	48.32	171.04	37.76	39.36	102.08	24.16	616.16
2012-04-21	174.24	102.88	84.00	46.08	161.60	36.80	23.04	82.88	24.16	502.72
2013-04-21	185.28	113.76	84.00	48.32	130.56	37.76	26.56	99.84	24.16	504.16
2014-04-21	166.88	95.36	84.00	48.00	156.80	37.76	35.20	101.12	24.16	521.92
2015-04-21	268.80	197.28	84.00	48.32	166.56	37.76	38.88	102.08	24.16	638.24
2016-04-21	59.04	38.40	54.88	2.72	134.08	26.56	12.00	28.00	7.68	267.36
2017-04-21	289.44	217.92	84.00	48.32	169.12	37.76	37.92	102.08	24.16	660.48
2018-04-21	235.36	163.84	84.00	48.32	151.36	37.76	34.72	96.80	24.16	580.16
2019-04-21	147.52	76.00	83.04	47.20	107.36	37.76	21.92	93.44	24.16	432.16
2020-04-21	255.36	183.84	84.00	48.32	170.72	37.76	38.88	102.08	24.16	628.96
2021-04-21	151.36	102.08	84.00	13.12	74.40	37.44	12.64	28.00	22.24	326.08
2022-04-21	148.96	98.72	82.72	19.36	79.04	37.28	17.28	35.68	24.16	342.40
2023-04-21	151.04	97.92	82.24	24.16	117.60	36.32	13.92	35.68	24.16	378.72

Total Area (km²) Within Each Subpopulation: 332.48 260.96 84 48.32 171.04 37.76 39.36 102.08 24.16 706.88

¹ Dry Habitat is defined as areas where the water table is below ground level.

Cape Sable Seaside Sparrows (CSSS)
Amount of dry habitat (km²) on 04/22/2024 compared to
04/22 in previous years of record, all CSSS subpopulations



Cape Sable Seaside Sparrows (CSSS)
Amount of dry habitat (km²) on 04/22/2024 compared to
04/22 in previous years of record, CSSS-subpopulation AX

